

# 7.14 T2020, T2040 & T2050 Control Head PCB

## T2020, T2040 & T2050 Control Head Parts List (IPN 220-01321-04)

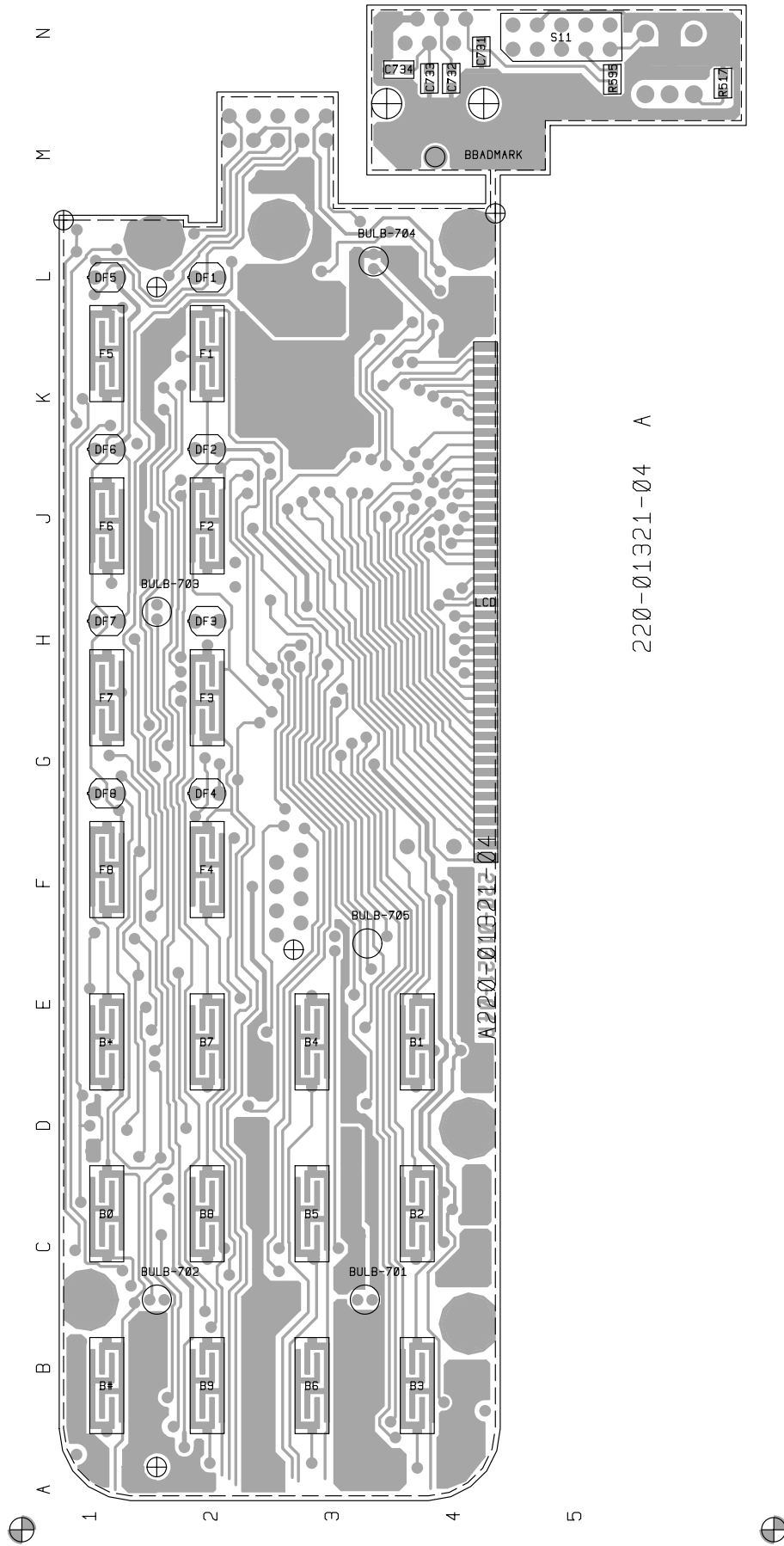
Ref	Var	IPN	Description	Ref	Var	IPN	Description
B701		260-00010-11	LAMP 5V 60MA T-1 3MM OD 0.63LM US REF 68	P11		240-00020-87	HEADER 2X5 WAY RGT ANGLE PCB MTG MOLEX
B702		260-00010-11	LAMP 5V 60MA T-1 3MM OD 0.63LM US REF 68	PT501		040-05100-20	SWITCH ROT 10K LOG POT 3A 16VDC SPST PC
B703		260-00010-11	LAMP 5V 60MA T-1 3MM OD 0.63LM US REF 68				
B704		260-00010-11	LAMP 5V 60MA T-1 3MM OD 0.63LM US REF 68	Q103		000-10008-47	(S) XSTR SMD BCW72 NPN GEN PURPOSE
B705		260-00010-11	LAMP 5V 60MA T-1 3MM OD 0.63LM US REF 68	Q701		000-10008-48	(S) XSTR SMD BCW60/BC848B215 NPN SOT23 A
				Q702		000-10008-57	(S) XSTR SMD BCW70 PNP SOT23 AF SML SIG
C102		014-07470-01	CAP TANT CHIP 4U7 'B' CASE 25V +-10% 267	Q703		000-10008-48	(S) XSTR SMD BCW60/BC848B215 NPN SOT23 A
C103		015-24100-08	CAP CER 0805 CHIP 1N 10% X7R 50V	Q704		000-10008-57	(S) XSTR SMD BCW70 PNP SOT23 AF SML SIG
C531		015-23150-01	CAP CER 0805 CHIP 150P 5% NPO 50V	Q705		000-10008-48	(S) XSTR SMD BCW60/BC848B215 NPN SOT23 A
C700		015-24100-08	CAP CER 0805 CHIP 1N 10% X7R 50V	Q706		000-10008-48	(S) XSTR SMD BCW60/BC848B215 NPN SOT23 A
C701		015-22220-01	CAP CER 0805 CHIP 22P 5% NPO 50V	Q710		000-10008-48	(S) XSTR SMD BCW60/BC848B215 NPN SOT23 A
C702		015-22220-01	CAP CER 0805 CHIP 22P 5% NPO 50V	Q711		000-10008-69	(S) XSTR SMD BC869 PNP 1W 2A SOT-89
C703		015-06100-08	CAP CER 1206 CHIP 100N 10% X7R 50V	Q712		000-10008-48	(S) XSTR SMD BCW60/BC848B215 NPN SOT23 A
C704		015-06100-08	CAP CER 1206 CHIP 100N 10% X7R 50V	Q713		000-10008-57	(S) XSTR SMD BCW70 PNP SOT23 AF SML SIG
C705		015-06100-08	CAP CER 1206 CHIP 100N 10% X7R 50V	Q714		000-10008-48	(S) XSTR SMD BCW60/BC848B215 NPN SOT23 A
C706		016-08470-01	CAP ELECT SMD 6X4MM 47M 16V	Q715		000-10008-57	(S) XSTR SMD BCW70 PNP SOT23 AF SML SIG
C707		015-25100-08	CAP CER 0805 CHIP 10N 10% X7R 50V				
C708		015-24470-08	CAP CER 0805 CHIP 4N7 10% X7R 50V	R106		036-14220-00	RES M/F 0805 CHIP 2K2 5%
C710		015-24100-08	CAP CER 0805 CHIP 1N 10% X7R 50V	R517		036-10000-00	RES M/F 0805 CHIP ZERO OHM
C711		015-25150-08	CAP CER 0805 CHIP 15N 10% X7R 50V	R595		036-12100-00	RES M/F 0805 CHIP 10E 5%
C712		015-24100-08	CAP CER 0805 CHIP 1N 10% X7R 50V	R701		036-14270-00	RES M/F 0805 CHIP 2K7 5%
C713		015-24470-08	CAP CER 0805 CHIP 4N7 10% X7R 50V	R702		036-14270-00	RES M/F 0805 CHIP 2K7 5%
C714		016-08100-01	CAP ELECT 6X4MM CHIP 10M 20% 16V	R703		036-14270-00	RES M/F 0805 CHIP 2K7 5%
C715		016-08100-01	CAP ELECT 6X4MM CHIP 10M 20% 16V	R704		036-14270-00	RES M/F 0805 CHIP 2K7 5%
C716		015-06100-08	CAP CER 1206 CHIP 100N 10% X7R 50V	R705		036-15470-00	RES M/F 0805 CHIP 47K 5%
C717		015-25150-08	CAP CER 0805 CHIP 15N 10% X7R 50V	R706		036-15470-00	RES M/F 0805 CHIP 47K 5%
*C720		014-07470-01	CAP TANT CHIP 4U7 'B' CASE 25V +-10% 26	R707		036-15470-00	RES M/F 0805 CHIP 47K 5%
C720		016-08470-01	CAP ELECT SMD 6X4MM 47M 16V	R708		036-15470-00	RES M/F 0805 CHIP 47K 5%
C721		015-24100-08	CAP CER 0805 CHIP 1N 10% X7R 50V	R709		036-15470-00	RES M/F 0805 CHIP 47K 5%
C722		015-06100-08	CAP CER 1206 CHIP 100N 10% X7R 50V	R710		036-13470-00	RES M/F 0805 CHIP 470E 5%
C723		015-06100-08	CAP CER 1206 CHIP 100N 10% X7R 50V	R711		036-13470-00	RES M/F 0805 CHIP 470E 5%
C725		015-24100-08	CAP CER 0805 CHIP 1N 10% X7R 50V	R712		036-13470-00	RES M/F 0805 CHIP 470E 5%
C726		015-24100-08	CAP CER 0805 CHIP 1N 10% X7R 50V	R713		036-15470-00	RES M/F 0805 CHIP 47K 5%
C727		015-06100-08	CAP CER 1206 CHIP 100N 10% X7R 50V	R714		036-15470-00	RES M/F 0805 CHIP 47K 5%
C728		015-25100-08	CAP CER 0805 CHIP 10N 10% X7R 50V	R715		036-14470-00	RES M/F 0805 CHIP 4K7 5%
C729		015-25100-08	CAP CER 0805 CHIP 10N 10% X7R 50V	R716		036-14470-00	RES M/F 0805 CHIP 4K7 5%
C730		015-24100-08	CAP CER 0805 CHIP 1N 10% X7R 50V	R717		036-14270-00	RES M/F 0805 CHIP 2K7 5%
C731		015-25100-08	CAP CER 0805 CHIP 10N 10% X7R 50V	R718		036-15470-00	RES M/F 0805 CHIP 47K 5%
C732		015-25100-08	CAP CER 0805 CHIP 10N 10% X7R 50V	R719		036-15100-00	RES M/F 0805 CHIP 10K 5%
C733		015-24100-08	CAP CER 0805 CHIP 1N 10% X7R 50V	R720		036-12100-00	RES M/F 0805 CHIP 10E 5%
C734		015-25220-08	CAP CER 0805 CHIP 22N 10% X7R 50V	R721		036-15330-00	RES M/F 0805 CHIP 33K 5%
				R722		036-15180-00	RES M/F 0805 CHIP 18K 5%
D1		008-00010-25	(S) LED 2MM GREEN TOWER 3.8MM BASE ROHM	R723		036-13330-00	RES M/F 0805 CHIP 330E 5%
D2		008-00010-25	(S) LED 2MM GREEN TOWER 3.8MM BASE ROHM	R724		036-13330-00	RES M/F 0805 CHIP 330E 5%
D3		008-00010-25	(S) LED 2MM GREEN TOWER 3.8MM BASE ROHM	R725		036-12100-00	RES M/F 0805 CHIP 10E 5%
D4		008-00010-25	(S) LED 2MM GREEN TOWER 3.8MM BASE ROHM	R726		036-15680-00	RES M/F 0805 CHIP 68K 5%
D5		008-00010-25	(S) LED 2MM GREEN TOWER 3.8MM BASE ROHM	R727		036-16120-00	RES M/F 0805 CHIP 120K 5%
D6		008-00010-25	(S) LED 2MM GREEN TOWER 3.8MM BASE ROHM	R728		036-12100-00	RES M/F 0805 CHIP 10E 5%
D7		008-00010-25	(S) LED 2MM GREEN TOWER 3.8MM BASE ROHM	R729		036-13330-00	RES M/F 0805 CHIP 330E 5%
D8		008-00010-25	(S) LED 2MM GREEN TOWER 3.8MM BASE ROHM	R730		036-15470-00	RES M/F 0805 CHIP 47K 5%
D701		001-10000-99	(S) DIODE SMD BAV99 DUAL SWTCH SNGLE INL	R731		036-15470-00	RES M/F 0805 CHIP 47K 5%
D703		001-10000-99	(S) DIODE SMD BAV99 DUAL SWTCH SNGLE INL	R733		036-14220-00	RES M/F 0805 CHIP 2K2 5%
D710		001-10084-33	(S) DIODE ZENER SMD BZX84C3V3 SOT23	R734		036-14220-00	RES M/F 0805 CHIP 2K2 5%
D711		001-10084-33	(S) DIODE ZENER SMD BZX84C3V3 SOT23	R735		036-14180-00	RES M/F 0805 CHIP 1K8 5%
D712		001-10084-33	(S) DIODE ZENER SMD BZX84C3V3 SOT23	R736		036-14680-00	RES M/F 0805 CHIP 6K8 5%
D713		001-10084-47	(S) DIODE ZENER SMD BZX84C4V7 SOT23	R737		036-15100-00	RES M/F 0805 CHIP 10K 5%
D714		001-10084-47	(S) DIODE ZENER SMD BZX84C4V7 SOT23	R738		036-14270-00	RES M/F 0805 CHIP 2K7 5%
				R739		036-14220-00	RES M/F 0805 CHIP 2K2 5%
IC701		002-20068-05	(S) IC MC68HC05C4 MASK PROG.MICRO-P 44P	R740		036-15120-00	RES M/F 0805 CHIP 12K 5%
IC702		002-10085-76	(S) IC SMD PCF8576T LCD DRIVER SOT-190	R741		036-15330-00	RES M/F 0805 CHIP 33K 5%
IC703		002-74900-04	(S) IC SMD 74HC04D HEX INVERTER BUFFD	R742		036-16560-00	RES M/F 0805 CHIP 560K 5%
IC704		002-74900-04	(S) IC SMD 74HC04D HEX INVERTER BUFFD	R743		036-12100-00	RES M/F 0805 CHIP 10E 5%
IC705		002-10078-05	(S) IC SMD 78L05 5V REG	R746		036-15100-00	RES M/F 0805 CHIP 10K 5%
IC706		002-10340-64	(S) IC SMD MC34064 LO VOLT SENSE	R747		036-16330-00	RES M/F 0805 CHIP 330K 5%
				R750		036-14470-00	RES M/F 0805 CHIP 4K7 5%
LCD		008-02029-00	(S) LCD DISPLAY A2M2523 8 CHR 14 SEG ALPH	R751		036-13470-00	RES M/F 0805 CHIP 470E 5%
				R752		036-13470-00	RES M/F 0805 CHIP 470E 5%

Ref	Var	IPN	Description	Ref	Var	IPN	Description
R753		036-13330-00	RES M/F 0805 CHIP 330E 5%				
R760		036-14470-00	RES M/F 0805 CHIP 4K7 5%				
R761		036-14470-00	RES M/F 0805 CHIP 4K7 5%				
R762		036-15100-00	RES M/F 0805 CHIP 10K 5%				
R763		036-15100-00	RES M/F 0805 CHIP 10K 5%				
R764		036-14330-00	RES M/F 0805 CHIP 3K3 5%				
R765		036-15100-00	RES M/F 0805 CHIP 10K 5%				
R766		036-15100-00	RES M/F 0805 CHIP 10K 5%				
R767		036-18100-00	RES M/F 0805 CHIP 10M 10%				
R768		036-15470-00	RES M/F 0805 CHIP 47K 5%				
R769		036-16180-00	RES M/F 0805 CHIP 180K 5%				
R770		036-15100-00	RES M/F 0805 CHIP 10K 5%				
R771		036-15100-00	RES M/F 0805 CHIP 10K 5%				
R772		036-15100-00	RES M/F 0805 CHIP 10K 5%				
R773		036-15100-00	RES M/F 0805 CHIP 10K 5%				
R774		036-15100-00	RES M/F 0805 CHIP 10K 5%				
R775		036-15100-00	RES M/F 0805 CHIP 10K 5%				
R776		036-15100-00	RES M/F 0805 CHIP 10K 5%				
R777		036-15100-00	RES M/F 0805 CHIP 10K 5%				
R778		036-13560-00	RES M/F 0805 CHIP 560E 5%				
R779		036-13560-00	RES M/F 0805 CHIP 560E 5%				
R780		036-13560-00	RES M/F 0805 CHIP 560E 5%				
R781		036-13560-00	RES M/F 0805 CHIP 560E 5%				
R782		036-13560-00	RES M/F 0805 CHIP 560E 5%				
R783		036-13560-00	RES M/F 0805 CHIP 560E 5%				
R784		036-13560-00	RES M/F 0805 CHIP 560E 5%				
R785		036-13560-00	RES M/F 0805 CHIP 560E 5%				
R790		036-13470-00	RES M/F 0805 CHIP 470E 5%				
R791		036-13390-00	RES M/F 0805 CHIP 390E 5%				
R792		036-12330-00	RES M/F 0805 CHIP 33E 5%				
R793		036-12330-00	RES M/F 0805 CHIP 33E 5%				
R795		036-13470-00	RES M/F 0805 CHIP 470E 5%				
R796		036-14120-00	RES M/F 0805 CHIP 1K2 5%				
R797		045-15100-00	RES NTC SMD 10K 5%				
S9A		240-04020-50	SKT 8WAY 2ROW(2X4) PCB MTG MICROMATCH				
S10		240-04021-61	SKT TELEPHONE JACK 6-WAY SIDE ENTY 555163				
X701		274-00010-33	XTAL 4MHZ TE-35 HC49U C/W TEFLON INS				

**T2020, T2040 & T2050 Control Head Mechanical & Miscellaneous Parts**

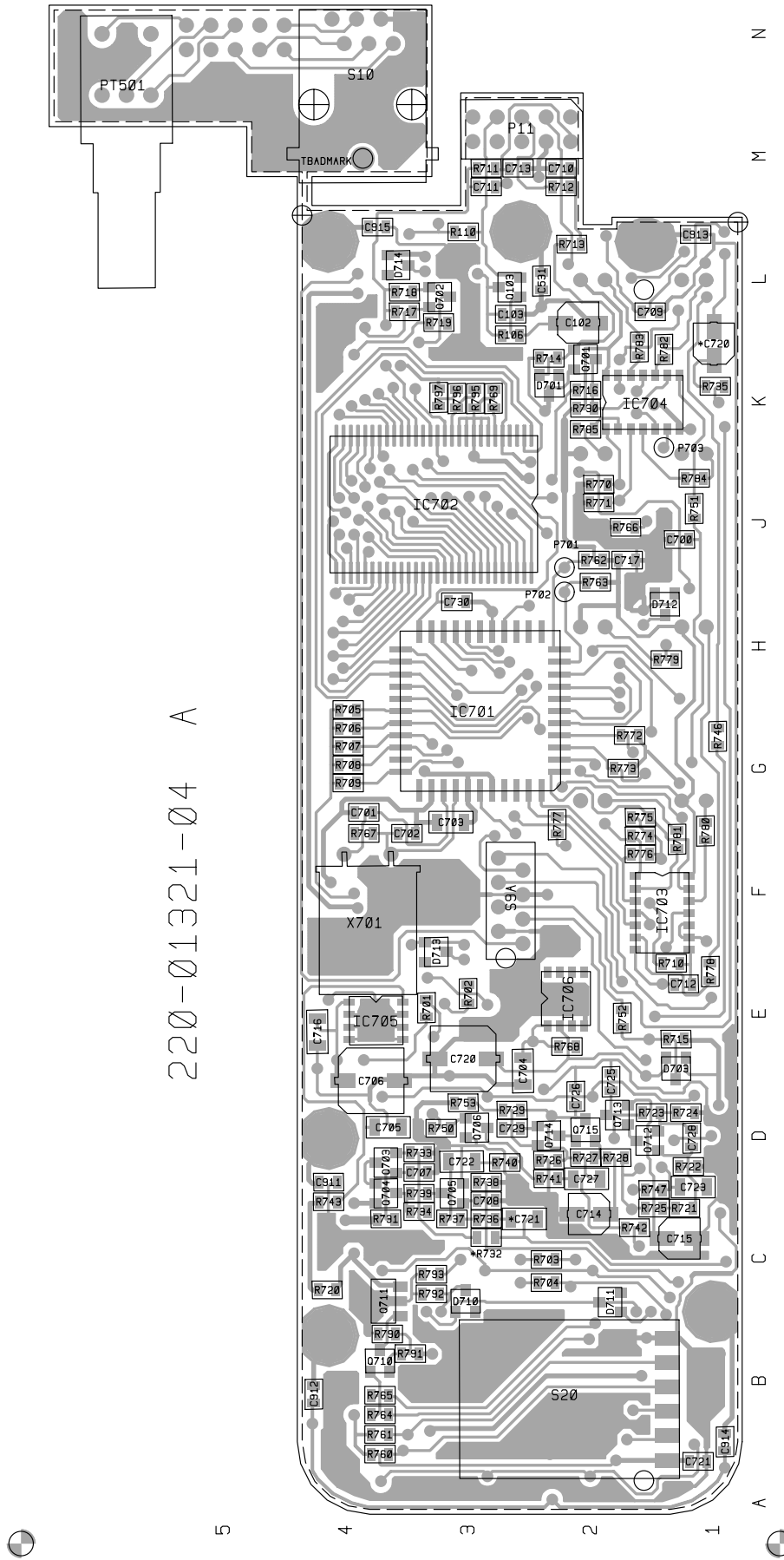
<b>IPN</b>	<b>Description</b>	<b>IPN</b>	<b>Description</b>
205-00010-12	CABLE FLAT RBBN 16 CORE 16/7/0.1 GREY		
209-01027-00	STRIP A3M2544 SI IMPREGNATED ELASTOMER 55X8MM		
220-01321-04	PCB T2000 LCD DISPLAY		
240-00020-56	PLUG 8WAY 2ROW(2X4) C.ORD MTG IDC MICROMATCH		
301-00001-03	ADAPTOR FRT PNL T2000 SII		
304-07036-02	LIGHT SPREADER 20 BUTTON T2000 SII		
311-01042-01	KNOB A3M2530 T2000 S11		
312-01046-03	LENS A2M2543 LCD DISPLAY T2000 FM2/TR2		
316-06430-02	PNL FRT SCR N T2020/40/50 SII		
349-00010-22	SCREW NO 4X3/8 PAN POZI PLASTITE		
349-00010-24	SCREW #4X5/8 PLASTITE PAN POZI		
356-00010-01	TAG SOLDER 3MM SHORT M6132/3.2		
365-00100-20	LABEL WHITE S/A 28X11MM QUIKSTIK RW718/4		
369-00020-29	TAPE VINYL FOAM 2 SIDE S/A 12X0.8MM INSEAL 51		
429-20000-05	T2000 SERIES II INSTALLATION GUIDE		
<b>T2020 VARIANT PARTS</b>			
311-03076-01	KEYPAD T2020 SII INTERNATIONAL		
459-20200-02	T2020 SERIES II USERS GUIDE		
<b>T2020 EMC VARIANT PARTS</b>			
240-00010-91	CONN MALE ON WIRE 18WAY MICROMATCH		
311-03076-01	KEYPAD T2020 SII INTERNATIONAL		
459-20200-02	T2020 SERIES II USERS GUIDE		
X2EF01	EMC FILTER PCB ASSEMBLY T2020 T2035 T2040 T2050		
<b>T2040 VARIANT PARTS</b>			
311-03078-01	KEYPAD T2040 SII INTERNATIONAL		
459-20400-02	T2040 SERIES II USERS GUIDE		
<b>T2040 EMC VARIANT PARTS</b>			
240-00010-91	CONN MALE ON WIRE 18WAY MICROMATCH		
311-03078-01	KEYPAD T2040 SII INTERNATIONAL		
459-20400-02	T2040 SERIES II USERS GUIDE		
X2EF01	EMC FILTER PCB ASSEMBLY T2020 T2035 T2040 T2050		
<b>T2050 VARIANT PARTS</b>			
308-13093-02	CHASSIS A1M2503 DIE CAST T2000 SERIES II		
311-03009-01	KEYPAD T2050 SII INTERNATIONAL DUAL MODE		
459-20200-02	T2020 SERIES II USERS GUIDE		
459-20400-02	T2040 SERIES II USERS GUIDE		





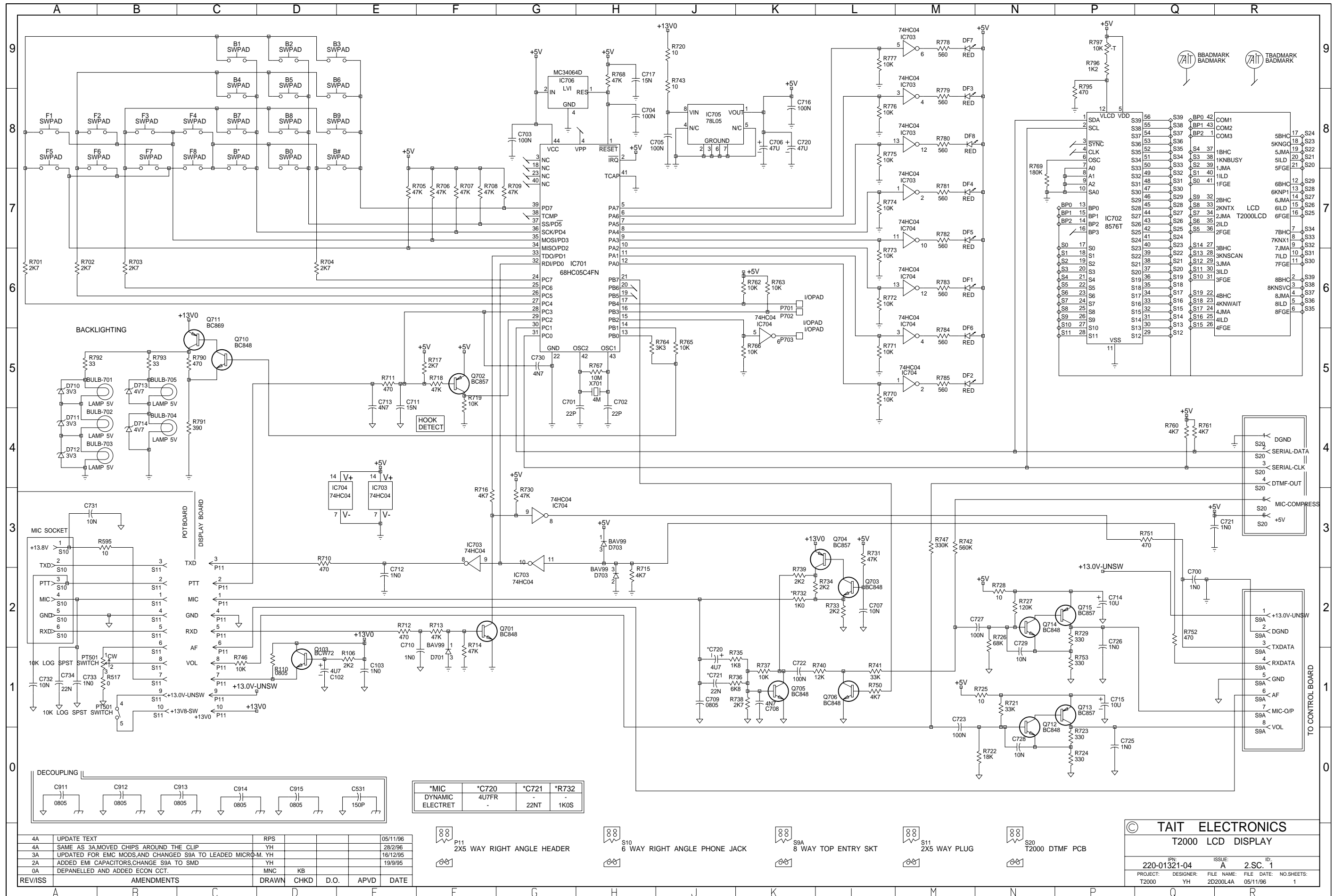
220-01321-04 A

T2020, T2040 & T2050 Control Head PCB (IPN 220-01321-04) - Bottom Side



220-01321-04 A

T2020, T2040 & T2050 Control Head PCB (IPN 220-01321-04) - Top Side



REV/ISS	AMENDMENTS	DRAWN	CHKD	D.O.	APVD	DATE
4A	UPDATE TEXT				RPS	05/11/96
4A	SAME AS 3A MOVED CHIPS AROUND THE CLIP				YH	28/2/96
3A	UPDATED FOR EMC MODS AND CHANGED S9A TO LEADED MICRO-M. YH					16/12/95
2A	ADDED EMI CAPACITORS, CHANGE S9A TO SMD				YH	19/9/95
0A	DEPANELLED AND ADDED ECON CCT.				MNC KB	

*MIC	*C720	*C721	*R732
DYNAMIC ELECTRET	4U7FR	22NT	1K0S

P11 2X5 WAY RIGHT ANGLE HEADER

S10 6 WAY RIGHT ANGLE PHONE JACK

S9A 8 WAY TOP ENTRY SKT

S11 2X5 WAY PLUG

S20 T2000 DTMF PCB

© TAIT ELECTRONICS  
T2000 LCD DISPLAY

IPN: 220-01321-04	ISSUE: A	ID: 2.S.C. 1
PROJECT: T2000	DESIGNER: YH	FILE NAME: 2D200L4A
		FILE DATE: 05/11/96
		NO. SHEETS: 1

